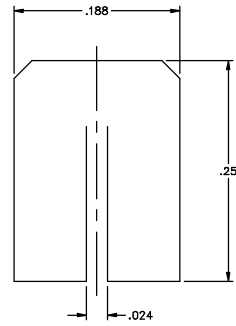
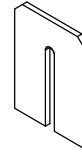


DATE REVISION: 10/25/01

CATALOG NUMBER
9001-932-3

MATERIAL AND FINISH
SHROUD: CRES 302; PASSIVATED



SHIM GAGE	IDENT CODE: 82316	GILBERT ENGINEERING
	REVISION: B	
SOURCE FILE: MECR# 1902	DWG. NO.: OL-9001-932-3	ASSY. PROC.: -